

ANGLE'S PLAYGROUND at Manion Park



A little piece of heaven on earth

Accessible Play, Inc.
www.accessibleplayinc.org





Index

Accessible Play, Inc.

About Us	4
Mission Statement	5
Board of Directors.....	6
Estimated Cost	7
List of Supporters	8
Donor Opportunities	9
Playground Layout.....	10-11
Restroom Pavilion	12
State of Missouri Certificate of Incorporation.....	13
Internal Revenue Services (IRS) Determination Letter	14



Accessible Play, Inc. – About Us

Gary Behlmann is the driving force behind Accessible Play, Inc. Mr. Behlmann is a life long resident of Florissant, Missouri and serves as Chairman of the Florissant Disability Awareness Commission. He has been involved with and concerned for improving the lives of people with disabilities for the past twenty-five years. In November 2007, he and his wife Karen visited Zachary's Playground in Lake St. Louis, Missouri. Both of them were awed and even brought to tears by what they saw. From that moment, Gary knew he wanted a playground like that for North St. Louis County a place where children of all abilities could play, learn and grow together.

Why would anyone want to take on the enormous task of raising almost \$1,500,000 to build a playground like this? Gary's daughter, Angie Behlmann, was born in September 1983. Angie was born prematurely during a very difficult delivery. As a result, she was hydrocephalic and had Cerebral Palsy.

Angie's early days were difficult for Karen and Gary. They were dealing with countless doctor visits, tests and surgeries and they had little knowledge of disabilities. Angie never was able to talk or walk. She had to be fed with a feeding tube. Due to the hydrocephalus, she had to have shunts implanted in her brain to relieve the pressure. Eventually an infection in a shunt took Angie's life in April, 1991. But her parents knew that Angie was so much more than a list of medical terms she had an unbelievable will to live and a spirit to make a difference in the world. Gary and Karen will tell you that despite being in pain every minute of every day, Angie always had the most beautiful smile on her face. When she entered a room, that smile would brighten the spirits and lift the hearts of everyone present. Her unconditional love of life gave Gary and Karen the strength and courage to become advocates for all people with disabilities. Angie's funeral was the greatest tribute of all; people who did not know Gary or Karen told them how Angie had inspired their lives in such a meaningful way.

In memory of their beautiful daughter, Angie, Gary and Karen would like to build a playground where Angie can once again share her joyful spirit. They want to offer others "A LITTLE PIECE OF HEAVEN ON EARTH" a place where there are no physical barriers where children of all abilities can play happily together.

In October 2008 a small group of Florissant residents, led by Gary Behlmann came together to form Accessible Play, Inc. a non-profit corporation. The Internal Revenue Service granted Accessible Play 501(c)3 tax-exempt status and the State of Missouri exemption from sales tax.

The nearest accessible playground is almost 22 miles from Florissant; therefore, the Board of Directors wants our playground to be a destination not only for the residents of Florissant but also for the surrounding communities, servicing an approximate population of two million people. Our playground will provide a place where children will learn to understand and accept others while enjoying the fun and excitement of being on the playground.

The City of Florissant is located in the northern section of St. Louis County Missouri. Our all inclusive playground area will be approximately 14,000 Sq. Ft. with a 20,000 Sq. Ft. parking lot. The playground and parking lot will include solar lighting and will be monitored with a state of the art surveillance system. The restroom area will include three private family suites along with ladies and men's facilities.

Accessible Play has received a tremendous amount of support from the community including the cities of Florissant, Hazelwood and Black Jack as well as other non-profit community organizations such as Paraquad, St. Louis ARC and the Down Syndrome Association of Greater St. Louis.

Accessible Play, Inc. – Mission Statement

Our Mission is to build an inclusive playground where all children can play side by side.

Our Vision is an environment of acceptance and understanding of differences – a little piece of heaven on earth.

Our Purpose is to educate the public that every person has strengths and how to recognize them.

Our Focus is to be an example of what inclusion really means.



Accessible Play, Inc. – Board of Directors

Gary Behlmann, President

Mr. Behlmann is a life long resident of the City of Florissant. He and his wife Karen have been married for over 37 years. They have four children Kari, Angie (deceased), Barbara, and Charlene. Gary has worked raising awareness of disability related issues for the last 25 years. He has been on Florissant's Disability Awareness Commission for over 15 years and he is currently serving as the chairperson. His passion is to build an accessible playground so all children can play together side by side.

Pamela Lee, Secretary and Treasurer

Ms. Lee has lived in Florissant, Missouri her entire life. In addition to her involvement with Accessible Play, Inc she is also active in several other civic organizations including Florissant's Environmental Quality Commission. She is dedicated to Accessible Play, Inc and committed to the community. In 2009, Ms. Lee was awarded a Community Leadership Award by North County, Incorporated.

Ron Oliver, Board Member

Mr. Oliver has lived in the North County/Florissant area for forty years. Mr. Oliver has a special needs daughter and is very dedicated to promoting and supporting the building of an accessible playground. After retiring from McDonnell Douglas he spent seven years as a Teacher Assistant for Special School District. Mr. Oliver is currently working as a Substitute Teacher for Special School District.

Elizabeth Engelmeyer, Board Member

Ms. Engelmeyer has a bachelor's degree from Fontbonne University in special education cross-categorical K-12, a Masters degree from Webster University in educational technology, and Master +30 in education from Truman State University. Ms. Engelmeyer lives and teaches in the City of Florissant. She is a special education teacher for the Special School District of St Louis County. She teaches students with moderate-severe disabilities at Ackerman School. She has knowledge and abilities to make sure all children are included to the best of their abilities in everything they do.

Andrew Podleski, Board Member

Mr. Podleski is a long time Florissant resident. He holds a Bachelors of Arts in Mathematics from the University of Missouri-St. Louis. His career employment has been in the Intelligence Community having been employed by the Defense Mapping Agency (now the National GeoSpatial-Intelligence Agency (NGA), the former McDonnell-Douglas, BAE Systems and others. He is employed by Northrop-Grumman working as a Systems Engineer at NGA. Mr. Podleski currently serves the Citizens of Florissant as Ward 6 Councilman

Angie's Playground at Manion Park

Estimated Cost

Playground Equipment and 14,000 SF Play Surface	\$700,000.00
20,000 SF Porous Asphalt Parking lot consisting of 18 IN of 1 IN clean packed rock and 3 IN of asphalt	\$120,000.00
Main Entrance Pavilion and Comfort Station	\$165,000.00
Utility Infrastructure (Sewers, Plumbing and Electrical) Solar lighting for the parking lot and playground	To Be Determined
Surveillance System	\$40,000.00
Landscaping To Be Determined	
60 IN Decorative Fencing (700 LIN FT)	\$20,000.00

The Board of Directors will be soliciting support from labor unions, vendors and volunteers. Therefore, at this time the actual final cost is difficult to determine.

It is also our intent to be environmentally responsible in all aspects of the design and construction of our playground.



List of Supporters

Mayor Robert G. Lowery, Sr., City of Florissant
Resolution of the City Council Florissant Missouri
St. Louis ARC
Paraquad

Down Syndrome Association of Greater St. Louis
Proclamation from the City of Hazelwood , Missouri
Resolution from the Hazelwood School Board
Proclamation from the City of Black Jack , Missouri
North County, Inc.

The Board and volunteers of Accessible Play Inc. would like to take this opportunity to thank our donors. Without your past and future support, Angie's Playground at Manion Park would not be possible. We all sincerely thank you.

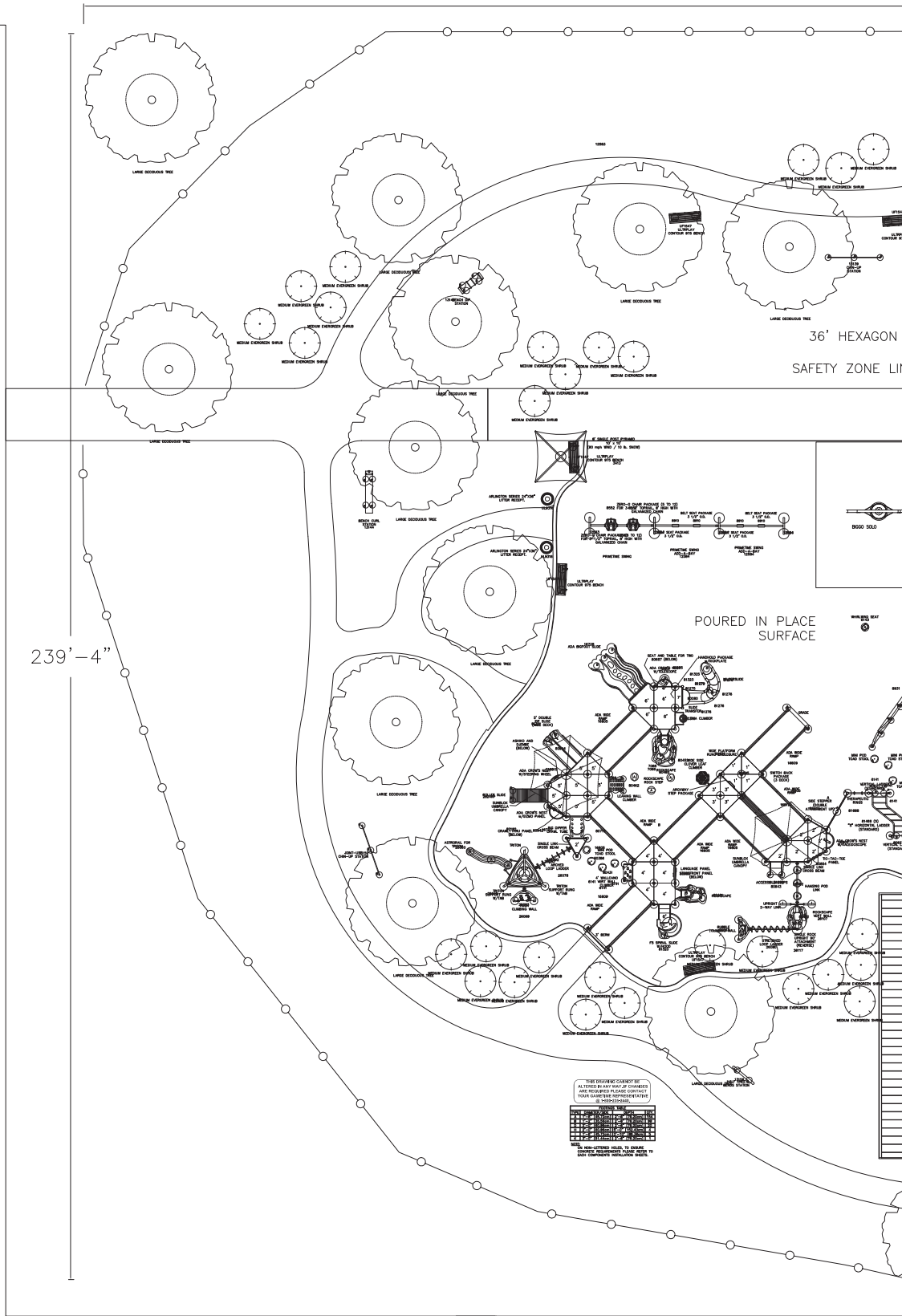
The Board of Directors and Volunteers



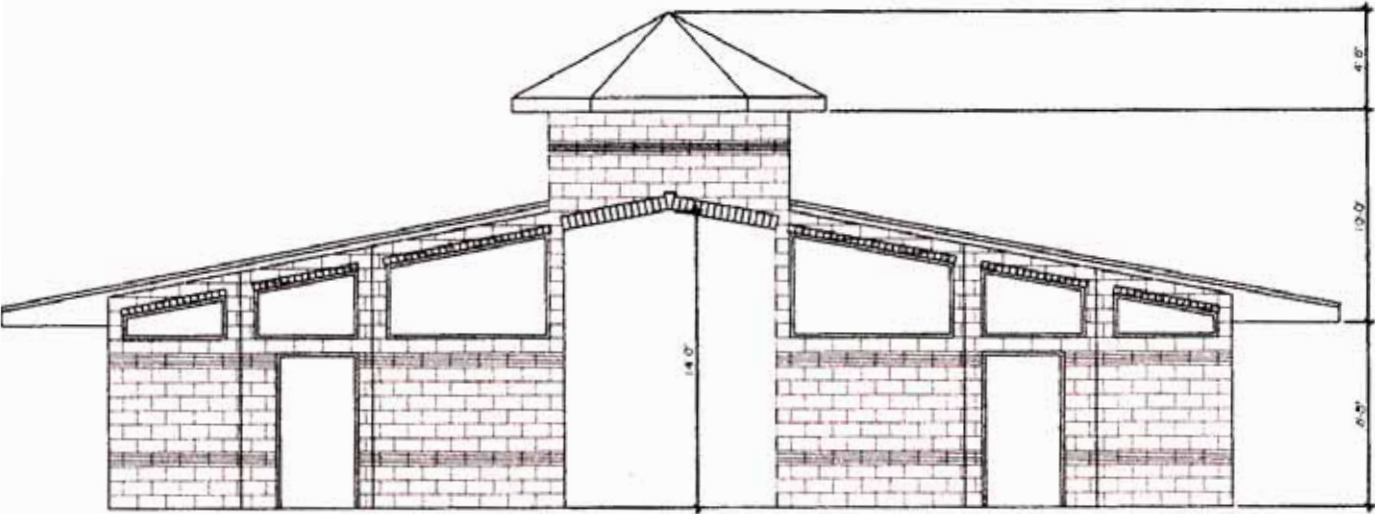
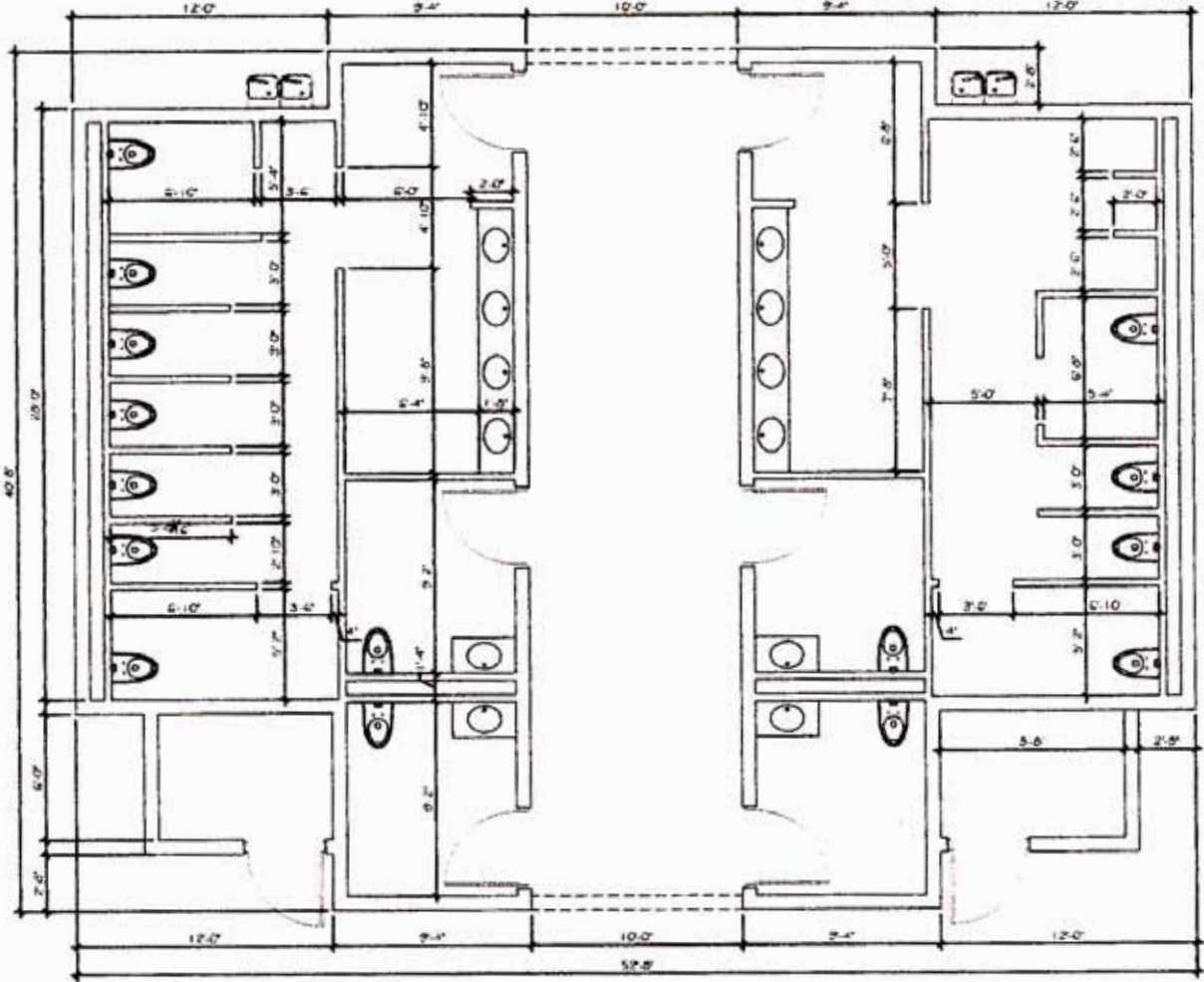


Angie's Playground Equipment Pricing Breakdown:

5-12 Unit	\$101,718.00
2-5 Unit	\$32,472.20
5-12 Swings	\$4,268.00
2-5 Swings	\$4,484.00
GT Jams Panel Grouping	\$7,748.00
Theater Station	\$6,480.00
Spring Rider (3 needed)	\$789.00 each
Whirlwind Seat (2 needed)	\$464.00 each
Spiral Game	\$1,121.00
GT Stockcar	\$1,164.00
Bigg-O Swing	\$10,000.00
Fitness Equipment	\$ 6,293.00
Litter Receptacle (12 needed)	\$1,125.00 each
Bench (9 needed)	\$468.00 each
ADA Picnic Table (2 needed)	\$883.00 each
Picnic Table (2 needed)	\$1,029.00 each



Accessible Play Restroom Pavilion



State of Missouri



Robin Carnahan
Secretary of State

CERTIFICATE OF AMENDMENT
OF A
MISSOURI NONPROFIT CORPORATION

WHEREAS,

Accessible Play, Inc.
N00924625

a corporation organized under The Missouri Nonprofit Corporation Law has delivered to me its Articles of Amendment of its Articles of Incorporation and has in all respects complied with the requirements of law governing the Amendment of Articles of Incorporation under The Missouri Nonprofit Corporation Law, and that the Articles of Incorporation of said corporation are amended in accordance therewith.

IN TESTIMONY WHEREOF, I hereunto
set my hand and cause to be affixed the
GREAT SEAL of the State of Missouri.
Done at the City of Jefferson, this
13th day of January, 2009.

Robin Carnahan

Secretary of State



INTERNAL REVENUE SERVICE
P. O. BOX 2508
CINCINNATI, OH 45201

DEPARTMENT OF THE TREASURY

Date: **MAR 18 2009**

ACCESSIBLE PLAY INC
C/O GARY BEHLMANN
845 MARK TWAIN DR
FLORISSANT, MO 63031

Employer Identification Number:
26-3560530
DLN:
17053051043029
Contact Person:
SHAWNTEL R SANDERS ID# 31456
Contact Telephone Number:
(877) 829-5500
Accounting Period Ending:
December 31
Public Charity Status:
170(b)(1)(A)(vi)
Form 990 Required:
Yes
Effective Date of Exemption:
October 10, 2008
Contribution Deductibility:
Yes
Addendum Applies:
No

Dear Applicant:

We are pleased to inform you that upon review of your application for tax exempt status we have determined that you are exempt from Federal income tax under section 501(c)(3) of the Internal Revenue Code. Contributions to you are deductible under section 170 of the Code. You are also qualified to receive tax deductible bequests, devises, transfers or gifts under section 2055, 2106 or 2522 of the Code. Because this letter could help resolve any questions regarding your exempt status, you should keep it in your permanent records.

Organizations exempt under section 501(c)(3) of the Code are further classified as either public charities or private foundations. We determined that you are a public charity under the Code section(s) listed in the heading of this letter.

Please see enclosed Publication 4221-PC, Compliance Guide for 501(c)(3) Public Charities, for some helpful information about your responsibilities as an exempt organization.

ACCESSIBLE PLAY INC

Sincerely,



Robert Choi
Director, Exempt Organizations
Rulings and Agreements

Enclosures: Publication 4221-PC





Accessible Play Inc. is sincerely grateful to Empire Comfort Systems Inc. for donating their time and resources to make this document possible.

